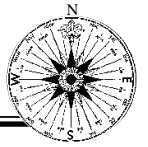


Spring 2009

# The Beatrix Farrand Society NEWS



## Beatrix Farrand Society Officers:

James Fuchs  
*President*

Richard Crawford  
*First Vice President*

Diane K. McGuire  
*Second Vice President*

Howard Monroe  
*Secretary*

Lee Patterson  
*Treasurer*



## Directors:

Peggy Bowditch  
Richard Crawford  
Emily Fuchs  
James Fuchs  
Robert Golden  
Marti Harmon  
Neil Houghton  
Arthur Keller  
Scott Koniecko  
Isabel Mancinelli  
Diane K. McGuire  
Howard Monroe  
Lee Patterson  
Bruce Riddell  
Lois Berg Stack  
Judith B. Tankard

## Advisors:

Eleanor Ames  
Judith Burger-Gossart  
Gilbert Butler  
Patrick Chassé  
Carolyn Hollenbeck  
Carole Plenty  
Beth Straus

## To Visit Garland Farm:

Contact the docent  
coordinator  
(207-276-5034) or log on to  
[www.beatrixfarrandsociety.org](http://www.beatrixfarrandsociety.org)  
and click on the Visit link  
to request a tour.

## Garland Farm Renovation Update

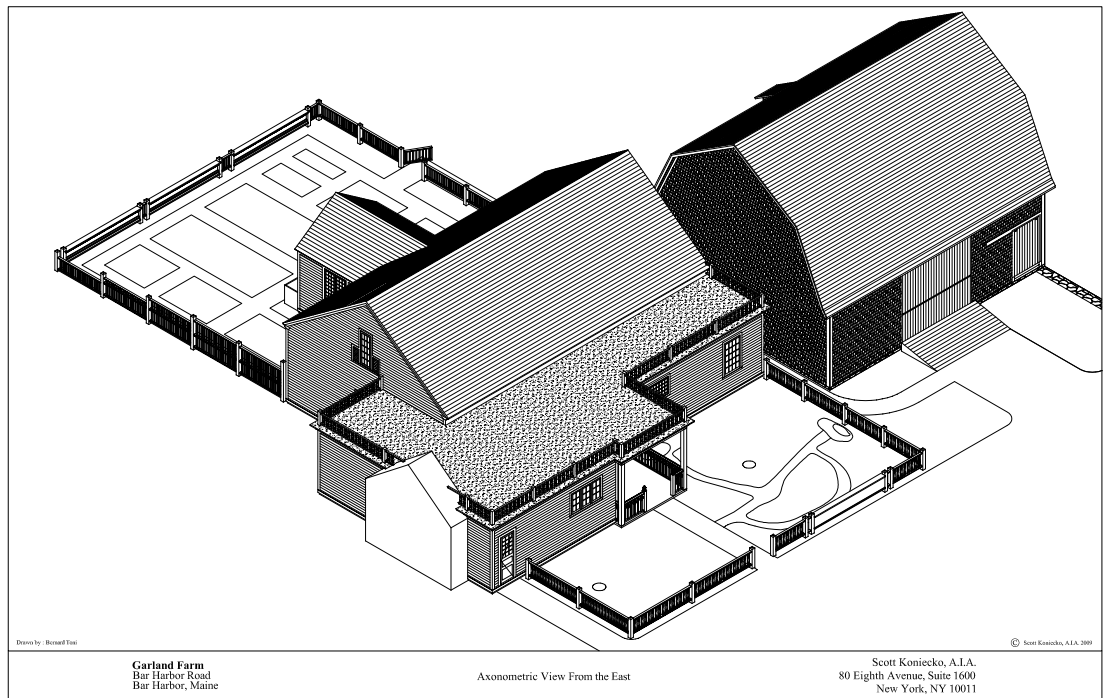
By Scott Koniecko

The first phase of building renovations at Garland Farm that are essential to bringing it up to code requirements for institutional use is well underway. During this past fall and winter, there have been a number of modifications made to the barn to convert it to the educational facility envisioned by the BFS. The sensitive adaptive re-use of the historic barn that is so integral to the Garland Farm property is the result of a close working relationship between the BFS and the Town of Bar Harbor. This mutual effort to create a noteworthy conversion while conforming to building code requirements is essential for the barn to begin its new life as an education center.

The architectural challenge was to make these modifications, such as adding the required handicap access to the building, without sacrificing the historical integrity of the barn or changing its overall appearance. The solution was to insert an interior ramp in the barn to connect to the adjacent narrow passageway leading to the terrace garden without defacing the exterior of the building. To reflect the character of the barn interior, it was decided to use recycled wood to blend in harmoniously. In addition to the ramp, a new lighting system was installed in the existing lofts and walls to provide down-lighting for people to take notes during a presentation as well as general up-lighting. A large overhead globe light will provide overall ambient light for the entire space. The lighting is controlled by a sophisticated dimming system that can be adjusted to the type of event being offered, from slide lectures to workshops and meetings. A new audio-visual system is also being installed to enable Powerpoint presentations, and to top it off, there will be a custom-designed lectern with the same wooden owl motifs found inside Beatrix Farrand's bedroom closet.

The barn renovation is expected to be ready for this summer's programs. The second phase of modifications will make the Farrand addition accessible and the third phase will create additional bathrooms.

— Scott Koniecko is an architect based in New York and a board member of the BFS.



Drawn by: Ronald East

Garland Farm  
Bar Harbor Road  
Bar Harbor, Maine

Axonometric View From the East

Scott Koniecko, A.I.A.  
80 Eighth Avenue, Suite 1600  
New York, NY 10011

© Scott Koniecko, A.I.A., 2009

Axonometric view of Garland Farm. © Scott Koniecko, A.I.A.

## 2009 BFS Lectures and Events

• **Saturday May 16 and Monday May 18, 10 AM to 2 PM** Volunteer Reunion and Spring Clean-Up at Garland Farm. A picnic lunch is provided for volunteers

• **Wednesday May 20, 10 AM to 12 noon** Spring Pruning Workshop with Fran West

Fran West returns to Garland Farm to give her popular pruning workshop. Participants should bring their own pruning shears and in lieu of a fee, please consider making a donation to The Beatrix Farrand Society. Copies of Fran's popular DVD "The Formula for Pruning Mastery" will be available for purchase. Visit Fran's website [www.pruningmatters.com](http://www.pruningmatters.com) to learn more about her work.

• **Tuesday June 30: 10 AM to 1 PM** Docent Orientation and Update. A picnic lunch is provided for participants

• **Wednesday July 8, 3 PM to 5 PM** join Us for Beatrix Farrand's Birthday Celebration and Afternoon Tea. There is no charge for this event, but donations and gifts are welcome

• **Saturday July 18, 10 AM to 12 noon** Flower Arranging for Special Occasions

In this demonstration by Mt. Desert's leading professional flower arranger, Betsy Rawley will show how to make arrangements for a birthday party, a summer luncheon, and a dinner party, as well as a special hall arrangement to welcome summer guests. Raffle tickets for the arrangements will be available for purchase and the winners will be announced after the demonstration. Fees: \$10 BFS members \$15 non-members

• **Saturday August 1, 11 AM to 12:30 PM** A Sampling of Maine's Historic Residential Landscapes

Join us for this free slide lecture following the BFS Annual Meeting. Landscape architect and author Theresa Mattor will discuss the rich heritage

of designed landscapes in Maine based on images from her new book, *Designing the Maine Landscape*. Following the lecture, there will be a reception and book-signing with Theresa's coauthor, Lucie Teegarden.

• **Wednesday August 5, 9 AM to 1 PM** Annual Fix-it Day at Garland Farm. Refreshments are provided for participants

• **Saturday August 15, 10 AM to 12 noon** Understanding Perennials: A User's Guide

Bill Cullina, garden curator of the Coastal Maine Botanical Gardens, will share his insights on perennials, discussing why some are drought-tolerant, while others are variegated, and still others have different root structures. After the lecture, he will sign copies of his new book, *Understanding Perennials: A New Look at an Old Favorite*. Fees: \$10 BFS members \$15 non-members

• **Thursday September 10, 7 PM to 9 PM** Lunaform: A Slide Tour of a Maine Manufacturer

Phid Lawless, a co-founder of Lunaform, will discuss the firm's distinctive hand built, all-weather garden vessels found in many gardens across the United States. Inspired by classical designs as well as the work of Eric Soderholtz, Lunaform provides beautiful containers for many uses. The slide lecture will highlight some of the firm's original designs, custom work, installations, and restoration. This program will be held at Woodlawn Museum (The Black House) in Ellsworth. Suggested donation is \$10. To reserve a place, call 207-667-8671 or email [events@woodlawnmuseum.org](mailto:events@woodlawnmuseum.org)

• **Friday October 9, 3:30 PM to 5 PM** Reception and book-signing for Judith Tankard's new book, *Beatrix Farrand: Private Gardens, Public Landscapes*. There is no charge for this event

To confirm program times, fees, and locations, visit [www.beatrixfarrandsociety.org](http://www.beatrixfarrandsociety.org) or call 207-288-0237 one week prior to the scheduled event for recorded information.

## New Website Launched

Under the skillful direction of BFS volunteer Shirley Beccue, the BFS has re-launched its website under a new name, [www.beatrixfarrandsociety.org](http://www.beatrixfarrandsociety.org). Please log on and visit some of the new links, including Events to learn about upcoming programs, Learn More with articles about Garland Farm, Links to websites for other organizations and Farrand commissions, Plant

Profiles with Carolyn Hollenbeck's popular features from *The Beatrix Farrand Society NEWS*, and Library and Collections. Many of the illustrations come from the BFS collections, including photographs by Patrick Chassé and Pressley Associates. If you have any comments, please email [editor@beatrixfarrandsociety.org](mailto:editor@beatrixfarrandsociety.org). Please note that all email addresses have changed to [beatrixfarrandsociety.org](http://beatrixfarrandsociety.org)

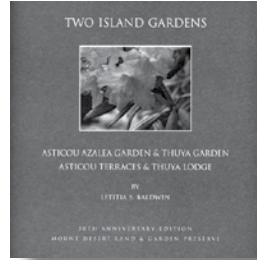


## Spring Reading

A new crop of books of interest to BFS members are available this spring. Leading the list is *Designing the Maine Landscape* (Down East) by Theresa Mattor and Lucie Teegarden, who will be available for a book-signing on August 1. This visually appealing book is drawn from a ten-year survey of Maine's historic landscapes conducted by the Maine Olmsted Alliance for Parks and Landscapes. It showcases parks, private estates, golf courses, rural cemeteries, and designed neighborhoods. Among the landscapes featured are the Asticou Terraces, Asticou Azalea Garden, Thuya Garden, Capitol Park, Camden's Amphitheatre and the campuses of the University of Maine, among others. Among the famous designers included are Beatrix Farrand, Jens Jensen, the Olmsted firm, Charles Savage, Arthur Shurcliff, Fletcher Steele, and others.

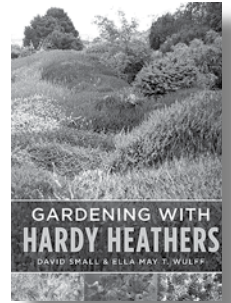


The Mount Desert Land and Garden Preserve has recently published two must-have volumes in an attractive slipcase entitled *Two Island Gardens*. The volumes are *Asticou Azalea Garden: The Work of Charles K. Savage* and *Thuya Garden: Asticou Terraces & Thuya Lodge*, both by Letitia S. Baldwin, and were published in celebration of the 50<sup>th</sup> anniversary of the two renowned



gardens in Northeast Harbor. As BFS members will recall, many of Farrand's trees and shrubs were moved to Northeast Harbor after the dissolution of Reef Point. The initiative was carried out by Charles K. Savage, who developed the gardens with funding provided by John D. Rockefeller, Jr. This publication can be ordered online at [www.gardenpreserve.org](http://www.gardenpreserve.org) or by calling 207-276-3727.

For avid horticulturists, *Gardening with Hardy Heathers* by David Small and Ella May T. Wulff (Timber Press) is not to be missed. This comprehensive account encompasses the heaths and heathers of the closely related genera *Calluna*, *Daboecia*, and *Erica*. The detailed selection of cultivated hardy heathers provides gardeners with the best performers, while other lists give useful information about specific qualities, design options, and availability. This beautifully illustrated book includes mention of the historic heathers at Garland Farm. Ms Wulff recently donated a copy of her book to the BFS Library.



## Plant Profile: *Laburnum x Watereri*

By Caroline Hollenbeck

The month of June brings glorious color to the small entrance garden at Garland Farm. Plump Rhododendron buds are bursting open, while pink and yellow flowers of *Lonicera* cascade over the front fence. The lovely soft pink blossoms of *Kolkwitzia amabilis* beckon visitors to stop and admire their beauty, but it is the sight of the long, yellow racemes of the *Laburnum x watereri* silhouetted against a clear blue sky that takes one's breath away after a long, cold Maine winter.

*Laburnum x watereri* is a cross between *Laburnum anagyroides* (the Common Laburnum or Golden Chain), with short, dense flower stems and *Laburnum alpinum* (the Scotch Laburnum), with longer racemes and fewer blossoms. Native to southern Europe, both trees were introduced into Britain between 1560 and 1590. Also known as Voss's Laburnum, *Laburnum x watereri* was hybridized around 1864. The result was a tree with long racemes, densely packed with flowers. Often called the Golden Chain Tree, Laburnums are members of the Class *Magnoliopsida* (flowering plants) and the Family *Fabaceae* (legumes). Obovate (egg-shaped) and 12 to 15 feet in height, *Laburnum x watereri* has alternate, trifoliate leaves (three leaflets) that are 1 ¼ to 3" long, bright green to blue green in summer, with insignificant color in the fall. Stems and bark are olive green and smooth, while the older bark of the trunk becomes rough and sometimes fissured. The spectacular yellow "chains" (racemes) can be 10 to 20 inches in length and are composed of individual pea-like flowers attached by short flower stalks (pedicles) to a

central axis (peduncle). The bloom time of these flowers is seven to ten days, before giving way to flat green pods that turn brown in the fall. All parts of this plant contain Cytisine, a toxic compound that is poisonous to people and livestock.

Although hardy in zones 5 through 7, and tolerant of a pH range of 5.5 to 8.0, a protected, well-drained site is necessary, as *Laburnum x watereri* is prone to sun scald and twig damage during severe winters. Twig blight and canker can be problematic as well. Propagation is possible using leaf-bud and root-cutting techniques or by growing from seed. Site requirements make this Laburnum a perfect specimen for growing in protected corners of buildings or by a patio where the spectacular floral display will be a springtime delight for anyone.



*Laburnum x watereri*. Courtesy Carolyn Hollenbeck

### The Quotable Gardener

"Gardening is all about the relationship of people in nature," Neva Goodwin (president of the Mount Desert Land & Garden Preserve), 2008

# From the Library Shelves

By Marti Harmon

As most of us know, Patrick Chassé was a founding member of the BFS, but he was also the first and largest donor of books and other materials that now form the core of our library. Among the 1,000 or more volumes that Patrick has donated is a collection of over 100 books devoted specifically to Asian art, architecture, philosophy, literature, garden design, horticulture, and flower arranging. There are a number of books on Feng Shui ranging from its philosophy to practical advice. *Reflections of the Spirit: Japanese Gardens in America*, with text and photos by Maggie Osler, is full of images of how Japanese theory is interpreted for the varied American landscape. The volume includes aesthetic principles, basic design elements, specific gardens, and places to visit. *Travels in China: A Plantsman's Paradise* by renowned plant collector Roy Lancaster illustrates the extraordinary number of common plants that have been introduced into our gardens from Asia. Patrick's donation also includes professional books covering the curriculum of landscape architecture, from design, site-planning, graphics, and architectural rendering to building materials and the essentials of wiring, plumbing, and carpentry. Among these books is Norman Newton's timeless book, *Design on the Land*, which details the history of designed landscapes from ancient times through the start of the National Park Service in

the U.S. For a beginner, the text can sometimes be overwhelming in its details, but it is certainly a "must-read" for anyone seriously interested in landscape architecture.

Another donation of great interest is material on Beatrix Farrand's family and career donated by Corliss Engle (who is related to Daisy Farrand, the wife of Max Farrand's brother Dr. Livingston Farrand). The items include a copy of *Behind Those Garden Walls in Historic Savannah* by Louisa Farrand Wood (Beatrix's niece), articles about Max Farrand's family, and a master's thesis on Beatrix Farrand's landscape at Princeton University. Judith Manchester has donated a complete set of the original *Reef Point Garden Bulletins* and Janet Allocca gave us some annual reports of the Santa Barbara Botanic Garden (Farrand was a trustee) and a copy of Farrand's article, "Notes from Bar Harbor, Maine," published in the *Bulletin of the American Association of Botanical Gardens and Arboreta*. We've also received a book donation from landscape historian Arleyn Levee that includes a copy of Guy Lowell's *American Gardens* with an original Reef Point bookplate.

If you'd like to donate books to the BFS, please contact [library@beatricefarrandsociety.org](mailto:library@beatricefarrandsociety.org) for more information. If any members have copies of books with bookplates for Reef Point Gardens, Beatrix Farrand, or Beatrix Jones, please consider donating them to the BFS Library, and if you spot one in a bookshop do let us know.