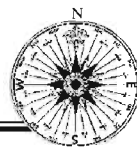


Fall 2008

# The Beatrix Farrand Society NEWS



## Beatrix Farrand Society Officers:

James Fuchs  
*President*

Richard Crawford  
*First Vice President*

Diane K. McGuire  
*Second Vice President*

Howard Monroe  
*Secretary*

Lee Patterson  
*Treasurer*



### Directors:

Peggy Bowditch  
Richard Crawford

Emily Fuchs  
James Fuchs

Robert Golden  
Marti Harmon

Neil Houghton  
Arthur Keller

Scott Koniecko  
Isabel Mancinelli

Diane K. McGuire  
Howard Monroe

Lee Patterson  
Bruce Riddell

Lois Berg Stack  
Judith B. Tankard

### Advisors:

Eleanor Ames  
Judith Burger-Gossart

Gilbert Butler  
Patrick Chassé

Carolyn Hollenbeck  
Carole Plenty

Elizabeth Mills  
Beth Straus

### To Visit Garland Farm:

Contact the docent coordinator (207-276-5034) or log on to [www.BeatrixFarrand.org](http://www.BeatrixFarrand.org) and click on the Visit link to request a tour.

## The Reef Point Gardens Herbarium

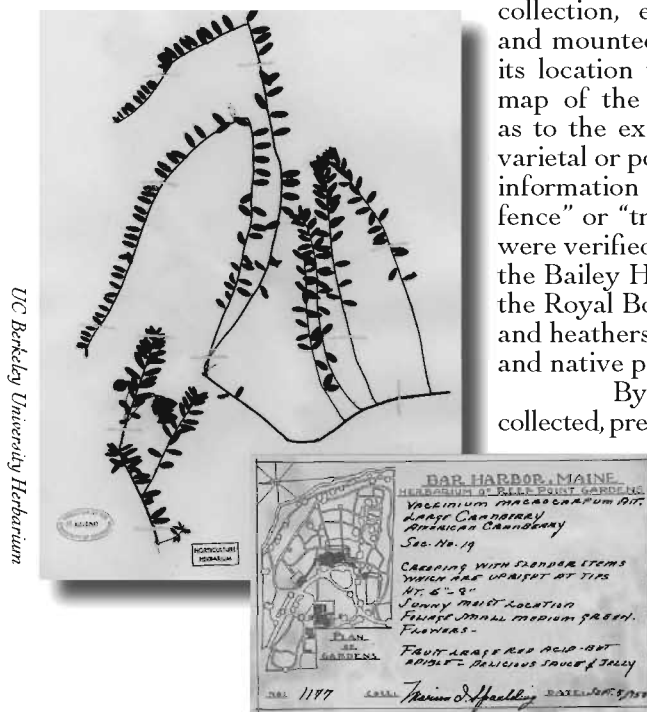
As many know, Beatrix Farrand donated her library, prints, papers, and other collections to the University of California at Berkeley in 1955. Included in the gift was the Reef Point Gardens Herbarium, a collection of over 1,800 mounted specimens of material gathered at Reef Point. Farrand believed that an herbarium was an essential component of her educational aim because it would provide a year-round study aid for the seasonal living collections. Most of the collecting and processing was done by Marion Ida Spaulding, who served as recorder for the Reef Point Gardens Corporation. In her article in *The Reef Point Gardens Bulletin* in August 1951, she described the word herbarium as “a collection of dried plants scientifically arranged.”

At first, Spaulding was somewhat overwhelmed by the new project, but after receiving good advice from the University of Maine at Orono, she began in earnest. After collection, each plant was then pressed, dried, and mounted in a folder known as a voucher and its location was noted with a red dot on a small map of the grounds. The plants were identified as to the exact species and genus, as well as any varietal or popular names, along with any pertinent information about the locale, such as “along the fence” or “trailing over rocks.” The identifications were verified with the Arnold Arboretum for trees, the Bailey Hortorium at Cornell for garden plants, the Royal Botanic Garden in Edinburgh for heaths and heathers, and the University of Maine for ferns and native plants.

By 1951, over 1,200 specimens had been collected, pressed, and stored in special steel herbarium cases. In 1954, when the English gardener, Kenneth Beckett, came to Reef Point for several months (see “Reef Point’s Last Gardener Rediscovered,” *Beatrix Farrand Society NEWS*, Spring 2007), he completed the project. After Ken’s departure later in the year and her inability to find another trained gardener to manage the grounds, Farrand decided to close Reef Point and

send her collections to California. When the herbarium arrived in California in September 1955, they were found to be “alive” with beetles and needed to be fumigated. Nonetheless, the gift was acknowledged as a “beautifully prepared collection (and) an exceedingly useful one.”

Marti Harmon, a member of the BFS Library and Collections Committee, was curious about Beatrix Farrand’s collections at the University of California and decided to see them this summer. After examining some of the thousands of design documents at the Environmental Design Archives, she paid a visit to the Jepson Herbaria to see the original Reef Point Gardens Herbarium. She was disappointed to learn that at some point after it arrived in California, Farrand’s vouchers were integrated into the larger Jepson Herbaria, rather than kept as a separate collection. Because it was difficult to quickly find the Reef Point specimens without looking through the entire collection, Marti chose to search for specific plants that she thought were in the collection. Under clematis, for example, she found 16 Reef Point vouchers, including *Clematis x Jackmanii*, *C. montana*, *C. fusca*, and *C. apifolia*, among others. On her next visit she will be looking for *Ericas*.



## *Beatrix Farrand Society Annual Meeting*

The 2008 Annual Meeting was held on August 2 at the College of the Atlantic, due to renovation work on the barn at Garland Farm. Attending members heard presentations by Scott Koniacko about the ongoing conversion of the barn into an accessible and well-equipped education center, from Diane McGuire about the scope and use of the library and collections, by Jim Fuchs about the progress in rehabilitating the Terrace Garden by the Maine Master Gardeners, and by Emily Fuchs who reviewed the season's visitation and tours of Garland Farm. Four new board members were elected: Peggy Bowditch, Marti Harmon, Neil Houghton, and Lois Berg Stack. Nominating Committee chair Dick Crawford reported that Patrick Chassé had resigned from the board in August and that Judith Burger-Gossart and Carolyn Hollenbeck had been elected to the Advisory Council. President Fuchs announced that the BFS Board voted to create the "Patrick Chassé Scholarship Fund for Graduate Education at Garland Farm." This new fund acknowledges Patrick's creative role in the Save Garland Farm effort, his leadership in the BFS, and his commitment to education. In gratitude to the BFS's many volunteers, President Fuchs distributed 65 Certificates of Appreciation. At the conclusion of the meeting, members and guests heard a lecture by Allyson Hayward.

## *New Board Members and Advisors*

*Peggy Bowditch* has been active in Maine and Pennsylvania horticultural circles for many years. She has served on the board of the Pennsylvania Horticultural Society and the Morris Arboretum and been an active exhibitor at the prestigious Philadelphia Flower Show. In 2007, she received the Garden Club of America Distinguished Service Medal. Peggy assumes the role as program coordinator for the BFS in 2009.

*Judith Burger-Gossart* is a member of the Bar Harbor Garden Club and a board member of the Mount Desert Island Historical Society. She divides her time between gardening in Maine, where she retired 10 years ago, and her art and antiques business, Sprucewind Antiques. Her garden has been featured in several recent garden tours, including the 75th convention of The Garden Federation of Maine Tour in 2006.

*Marti Harmon*, who serves as librarian for the BFS, is a consultant archivist for museums, libraries, and historical societies in Maine and has been instrumental in setting up the library and collections at Garland Farm. A Maine resident for twenty years, she is an avid, but challenged gardener.

*Carolyn Hollenbeck* has been an active member of the Master Gardener Program since 2000, first in New Jersey and more recently with the Hancock County Master Gardeners in Maine, who have been working at Garland Farm (see report elsewhere in this issue). Now a year-round resident of Mount Desert, she focuses on using native plants and attracting beneficial insects and pollinators to her property that is registered with the National Wildlife Federation.

*Neil Houghton* is a financial and marketing expert with decades of experience in serving on boards of small organizations. A resident of Pennsylvania, Neil has been coming to Mount Desert for over 40 years, where he maintains a Japanese-style garden created by his wife's family years ago.

*Lois Berg Stack* has worked at the University of Maine in Orono since 1987 as the Cooperative Extension's Ornamental Horticulture Specialist. Dr. Stack works with Maine's nursery, landscape, garden center, and greenhouses business on production and marketing issues. She also advises home gardeners and the Master Gardeners about environmentally friendly gardening.

## *2008 Lecture Series*

This year's lecture series kicked off in June with Paul Tukey, the country's acknowledged "guru" of organic lawn care, giving a talk describing summers on his grandparents' farm in western Maine and how his adult life in the landscaping business was beset with health problems that were traced to exposure to common pesticides and herbicides. Thus began a quest for organic techniques and products that culminated this year in an EPA-sponsored test of organic lawn care on the National Mall in Washington, D.C. His book, *The Organic Lawn Care Manual*, is the top-selling lawn care manual in the country ([www.safelawns.org](http://www.safelawns.org))

Jack Staub delivered a mouth-watering lecture in July on ten unusual fruits that every gardener should grow, including Chokeberry and Cornelian Cherry, both of which are native to Maine (Garland Farm boasts the state champion Cornelian Cherry brought from Reef Point in 1955). Jack's book, *75 Remarkable Fruits for Your Garden* received a stellar review in the August 2008 issue of the British publication, *Gardens Illustrated* ([www.hortulusfarm.com](http://www.hortulusfarm.com)).

Following the BFS annual meeting in August, garden historian Allyson Hayward charmed the audience with her lecture on the life and gardens of Norah Lindsay, an English garden designer who was a contemporary of Beatrix Farrand. Lindsay specialized in private, and often grand, gardens in Britain and Europe that were famous for their billowing flower borders. Following the lecture, she autographed copies of her book, *Norah Lindsay: The Life and Art of a Garden Designer*.

In late August, the acclaimed botanical illustrator, Linda Funk, gave a lecture on "Paper Gardens: The Art of Botanical Illustration," in which she provided a brief history from early descriptive and scientific works to modern artistic representations. The artist included examples of her own work and that of her students, some of which were on display (<http://huntbot.andrew.cmu.edu/ASBA/ASBA-Participant/F/FunkLi.html>).

The final lecture in September was given by Maine State Horticulturist, Ann Gibbs, on managing invasive plants in Maine. She explained the state's strategy of methodical identification and analysis of possible invasive species and the cooperation of landscape and nursery professionals, ecologists, and home gardeners. Her definitions of many terms and concepts, from "noxious" to "native," were enlightening. For more information: [www.maine.gov/agriculture/pi/horticulture/index.htm](http://www.maine.gov/agriculture/pi/horticulture/index.htm)

~ Patrick Chassé

# Terrace Garden Restoration Update

By Carolyn Hollenbeck, Team Coordinator

The Hancock County Master Gardeners have had a busy and productive season at Garland Farm. Working from a task list prepared by Patrick Chassé in March 2008, the team took on the challenge of beginning the restoration of the Terrace Garden. Team members Anne Chappe, Lynn Cheney, Susan Stahlberg, and Doe Wright played a vital role in accomplishing this challenge. The team is grateful to Garland Farm Garden Coordinator Jan McIntyre and Master Gardener Dan DeLong for the preparation, mulching, and maintenance of the holding bed; caretaker Caroline Felkel for keeping the newly planted material well watered; Tom McIntyre for assisting the gardeners; and Dr. Lois Berg Stack, Peggy Bowditch, and BFS Librarian Marti Harmon for providing support to our project. Since early April, the following have been accomplished:

Prepared string grids in the beds to locate emerging spring bulbs, identified and collected data about bulbs, prepared an identification key, recorded

information onto spread sheets, photographed bulbs, and collected specimens for pressing.

Photographed the Terrace Garden beds weekly throughout the season and tagged each photograph with its location in the garden.

Assisted Patrick Chassé in collecting core samples from selected beds in order to analyze their structure and, collected soil samples for nutrient analysis from all the remaining beds.

Collaborated with Jan McIntyre on the layout of the holding bed consisting of a series of parallel rows and paths; historic and non-historic plants are in separate rows.

Relocated bulbs to the holding bed following a protocol set by Dr. Lois Berg Stack of the University of Maine. This was done after blooming, but before the foliage died back.

Relocated all plants from the Terrace Garden beds (designated as 1, 2, 3, 4, 7, 8, and 9 in the *Cultural Landscape Report*) to the holding bed, sorted plants according to historic or non-historic status and planted the material in appropriate rows, and labeled plants with identifying markers.

Prepared a drawing for each bed indicating the location of plants on Beatrix Farrand's original plan, the *Cultural Landscape Report* plan of 2006, and the material found at the time of relocation in 2008.

Prepared weekly progress reports, including task notes, grid diagrams, and photographs. The team is currently compiling all information into a binder that will be presented to the BFS Library upon completion of the Master Garden Terrace Garden Project at Garland Farm.



*Terrace Garden, September 2008*

## Recent Visitors to Garland Farm

Despite the renovation of the barn and the ongoing garden rehabilitation, 2008 was a busy year at Garland Farm. Docent chair Emily Fuchs and docents Peggy Bowditch, Bonnie Briscoe, Elisabeth Curran, Dan DeLong, Marti Harmon, Arthur Keller, and Tom McIntyre welcomed 140 visitors to Garland Farm. Notable visitors included Lauri Twitchell, Director of the Blake Garden at the University of California at Berkeley; Corliss Knapp Engle, who is related to Livingston Farrand (one of two brothers of Max Farrand); and

Carmen Pearson, a Canadian who is researching Beatrix Farrand's writings. There were also several groups, including the Garden Vagabonds from Atlanta led by garden-tour leader Jeff Sainsbury and the Houston Garden Club, led by Robin Gregory of the Garden Club of Mount Desert. Among the visitors' comments were: "amazing place," "great educational potential," "loved looking at the plans," "it is important to preserve this wonderful place which deserves all the funding it can get," and, best of all, "keep going."

*Quotable Gardener* - "The owner of a garden is like the leader of an orchestra; he must know which of his instruments to encourage and which to restrain." - **Beatrix Farrand, 1907**

## *From the Library Shelves*

Have you ever thought about adding a small point of interest in your garden? British gardens are renowned for their quiet places of retreat for escape from the rain, a quiet spot to read, or perhaps an assignation. Our library has several books to help you imagine such a spot, such as *Follies: A National Trust Guide* by Headley and Meulenkamp, *Follies and Pleasure Pavillions* by George Mott, and *Gazebos and Other Garden Structure Designs* by Janet Strombeck with plans for 93 variations on the theme. We also have a small collection of books about unusual American garden features, such as *Garish Gardens Outlandish Lawns: A Celebration of Eccentric American Landscaping* by Modra and Roberts and *Eccentric Gardens* by Jane Owen, as well as over two dozen books on more traditional garden ornaments.

The Library is open every Wednesday from 9AM to 1PM or by appointment. Use of the library is limited to BFS members and their guests as well as visiting scholars of landscape design. The collection is non-circulating. Readers are welcome to sit in the library or the small conference room. To schedule an appointment, please contact Marti Harmon at 207-667-8344 or email her at [harmonmartha@hotmail.com](mailto:harmonmartha@hotmail.com)

## *Library Wish List*

As the library continues to grow with numerous book and periodical donations, we are also trying to build our current periodical subscriptions. We are looking for individual donors who might be willing to underwrite

the cost of a current subscription to a number of garden and landscape periodicals. If you would be interested in adopting a subscription, please contact Marti Harmon during regular library open hours or by email (see above) to learn more about this opportunity. The subscriptions we would most value are *Arnoldia*, *American Gardener*, *Fine Gardening*, *Garden Design*, *Garden History: Journal of the Garden History Society*, *Gardens Illustrated*, *Hortus*, *Horticulture*, *Landscape Architecture*, *Landscape Journal*, *People Places Plants*, *Preservation*, *Studies in the History of Gardens and Designed Landscapes*, *The English Garden*, and *The Garden*. We would also welcome back issues of any of these publications.



*Jan McIntyre (l), BFS Garden Coordinator and Mary Roper (r), Asticou Garden Manager for the Mount Desert Land and Garden Preserve, taking cuttings for propagation of rhododendrons at Garland Farm.*